

# MONDRIAN

## CANNES

75 Chambres & Suites – Au coeur de la Croisette – Vue mer –  
4000m<sup>2</sup> de jardin – Plage privée Hyde Beach Cannes – Mr.Nakamoto Restaurant & Bar





## NICE

Airport int. 1-latta Code  
20 km/12.43 mi  
**35 min by car**

## CANNES TRAIN STATION

S.N.C.F  
500 m/0.31 mi  
**5 min by car**

## 42

Highway exit  
5 km/3.11 mi  
**10 min by car**

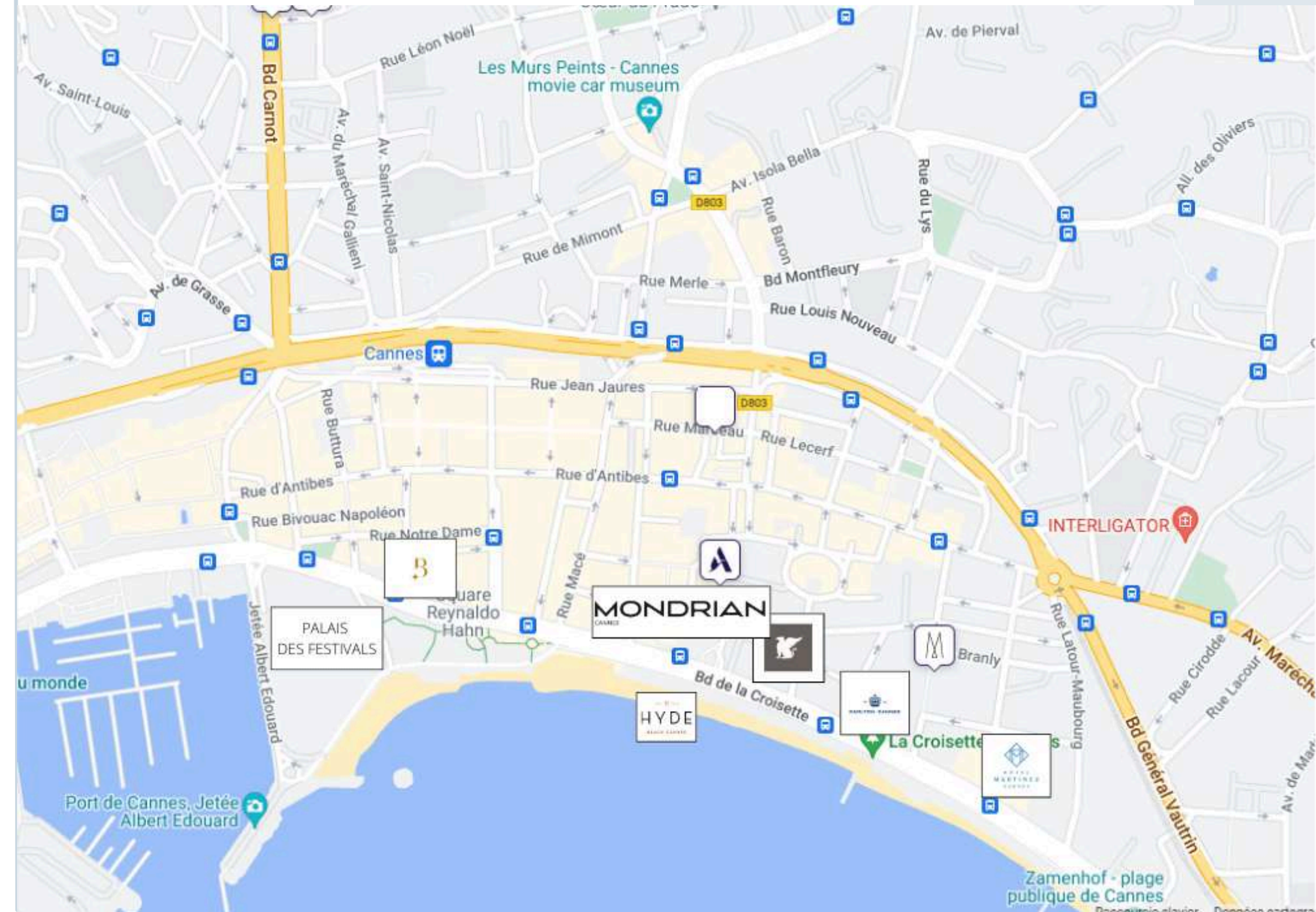
## CANNES MANDELIEU

Airfield/Héliport  
6.5 km/4.04 mi  
**15 min by car**

45 Boulevard De La Croisette  
06400 CANNES FRANCE

GPS:43.5511322, 7.0244327

# WHERE TO FIND US







CANNES

# PALME D'OR FOR THE VIEW

Mondrian Cannes' location is beyond your wildest dreams. Right in the middle of La Croisette, two-minute walk from the Palais des Festivals, the 5-star hotel offers 75 rooms and suites. Perfectly located near the many luxury stores and restaurants, it also allows you to immerse yourself in the heart of local life and Cannes' events. Mondrian Cannes offers a unique view of the infinite blue of the Mediterranean, intensified by its gardens in the foreground, unique on the Croisette.



# OUR ROOMS

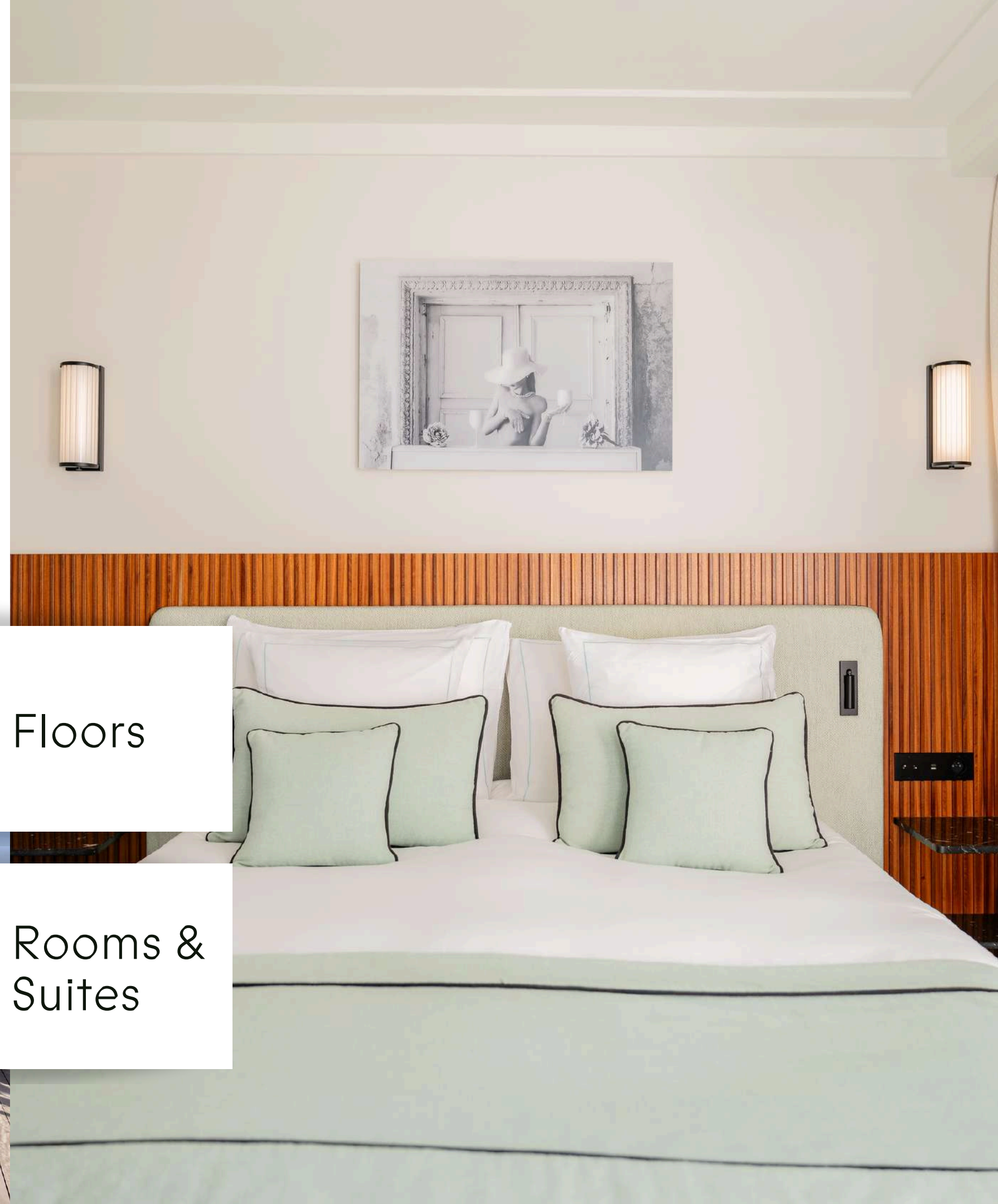
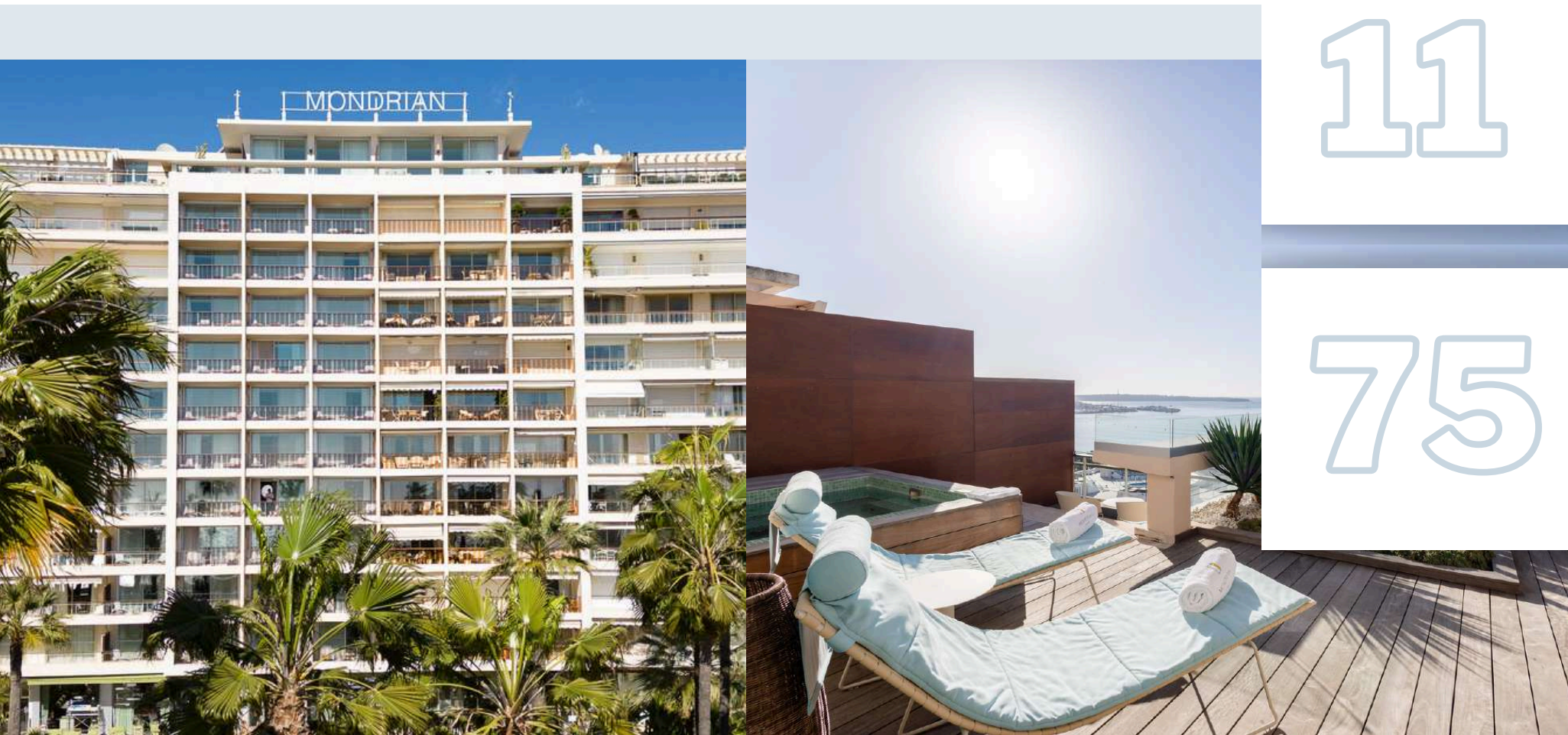
Mondrian Cannes offers 75 rooms and suites, the smallest of which measures 36 square metres. Here, the rooms and suites are large with huge balconies and bay windows, bathed in the Riviera's stunning golden light.

11

Floors

75

Rooms &  
Suites





# OUR DIFFERENT ROOM CATEGORIES



## JUNIOR SUITE

40m² | From 1st to 6th floor

 King Bed or Twin

 Shower or bathtub

 City view

 Desk

 Lounge area



## DELUXE ROOM

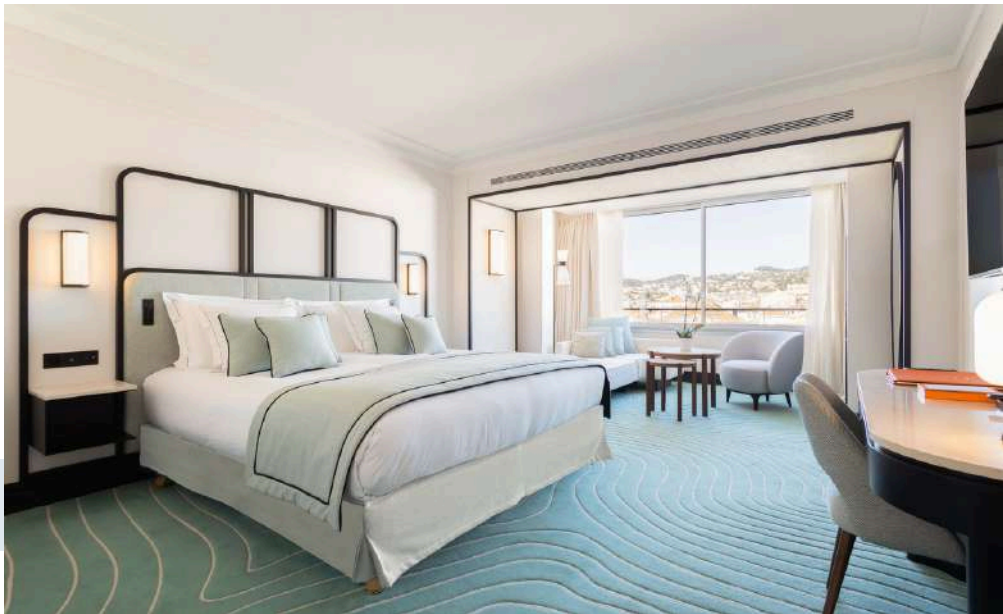
36m² | 11th floor

 King Bed or Twin

 Shower or bathtub

 City view

 Desk



## DELUXE JUNIOR SUITE

40m² | From 7th to 10th floor

 King Bed or Twin

 Shower or bathtub

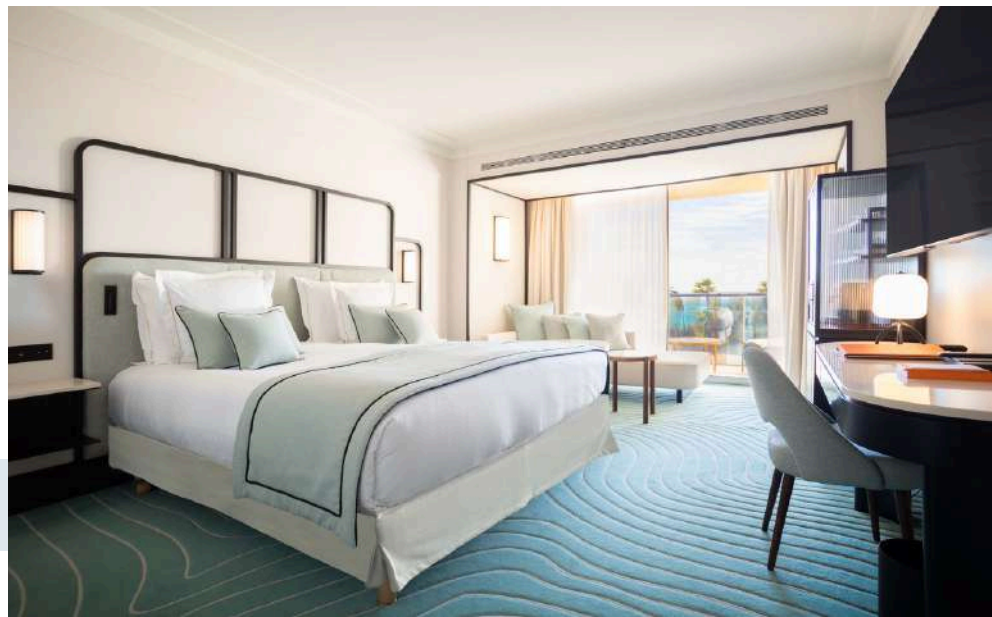
 City view

 Desk

 Lounge area



# OUR DIFFERENT ROOM CATEGORIES



## PRESTIGE ROOM

36m<sup>2</sup> / 7m<sup>2</sup> terrace | From 1st to 6th floor

 King Bed or Twin

 Shower or bathtub

 Sea view

 Desk

 Terrace




## PRESTIGE SUPERIOR ROOM


36m<sup>2</sup> / 7m<sup>2</sup> terrace | From 7th to 10th floor

 King Bed or Twin

 Shower or bathtub

 Sea view

 Desk

 Terrace



## PANORAMIC ROOM

35m<sup>2</sup> / 45m<sup>2</sup> terrace | 11th floor

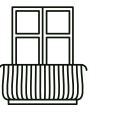
 Queen Bed

 Private spa

 Shower or bathtub

 Sea view

 Desk

 Terrace





# OUR DIFFERENT ROOM CATEGORIES

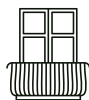


## SIGNATURE SUITE

65m<sup>2</sup> / 20m<sup>2</sup> terrace | 11th floor



King Bed or Twin



Terrace



Shower or bathtub



Sea view



Desk

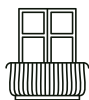


## SERENITY SUITE

45m<sup>2</sup> / 20m<sup>2</sup> terrace | 11th floor



Queen Bed



Terrace



Shower or bathtub



Sea view



Desk











# SEA VIEW ROOMS

















# SIGNATURE SUITE SEA-VIEW TERRACE

Located on the top floor of the hotel, the highest point on the Croisette, the "Signature Suite" offers a breathtaking view of the Bay of Cannes with a surface area of 914 sq. ft. , including a 269 sq. ft. terrace.



645 sq. ft. interior  
269 sq. ft. of terrace



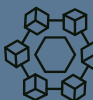
Lunch and dinner cocktails



9.8 ft. ceiling  
under ceiling



Coffee break



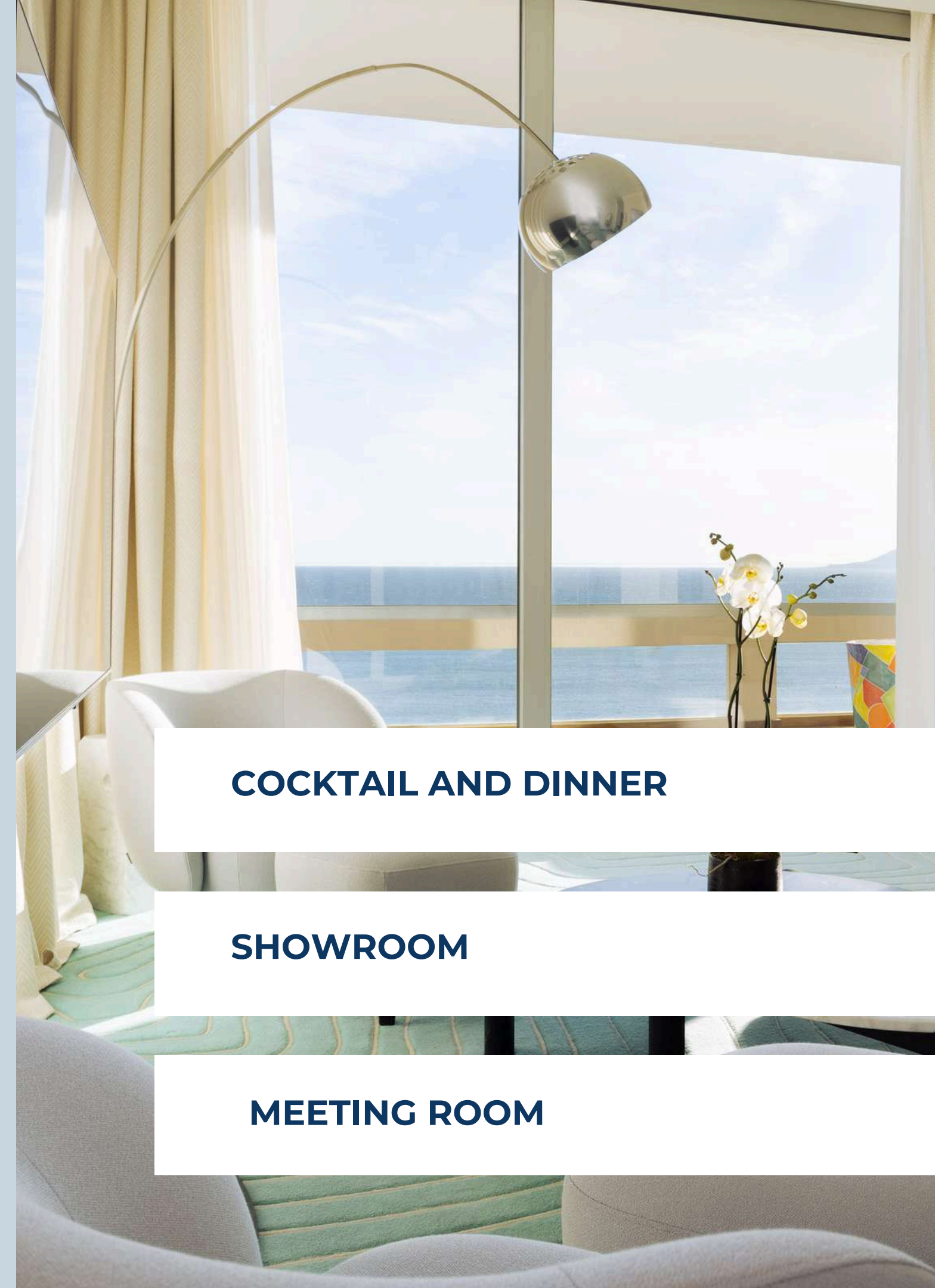
2 spaces  
Fully modular



65" and 55" screens

45 Boulevard de la Croisette, Cannes, France  
T. +33 (0)4 93 38 15 45 | [cannes@mondrianhotels.com](mailto:cannes@mondrianhotels.com)

 [mondriancannes](https://www.instagram.com/mondriancannes)  [www.mondriancannes.com](http://www.mondriancannes.com)



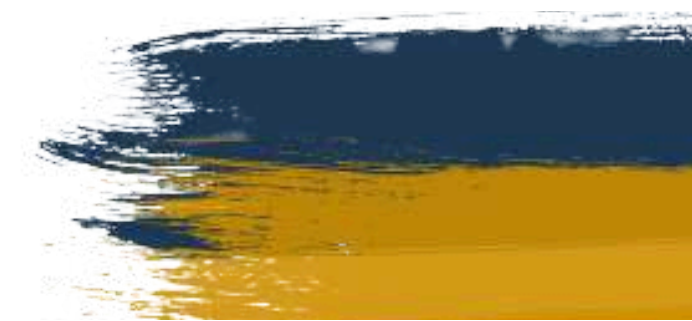
**COCKTAIL AND DINNER**

**SHOWROOM**

**MEETING ROOM**



Mr Nakamoto  
MONDRIAN



# RESTAURANT & BAR

The restaurant and bar, Mr. Nakamoto, offer spaces that can be privatized or semi-privatized. Combining elegance and authenticity, these versatile venues are ideal for hosting events both indoors and outdoors.

Restaurant: Open daily | 70 indoor seats | 106 outdoor seats - Up to 150 guests for indoor cocktail-style events.

Bar: Accommodates up to 100 guests indoors and outdoors in cocktail format.







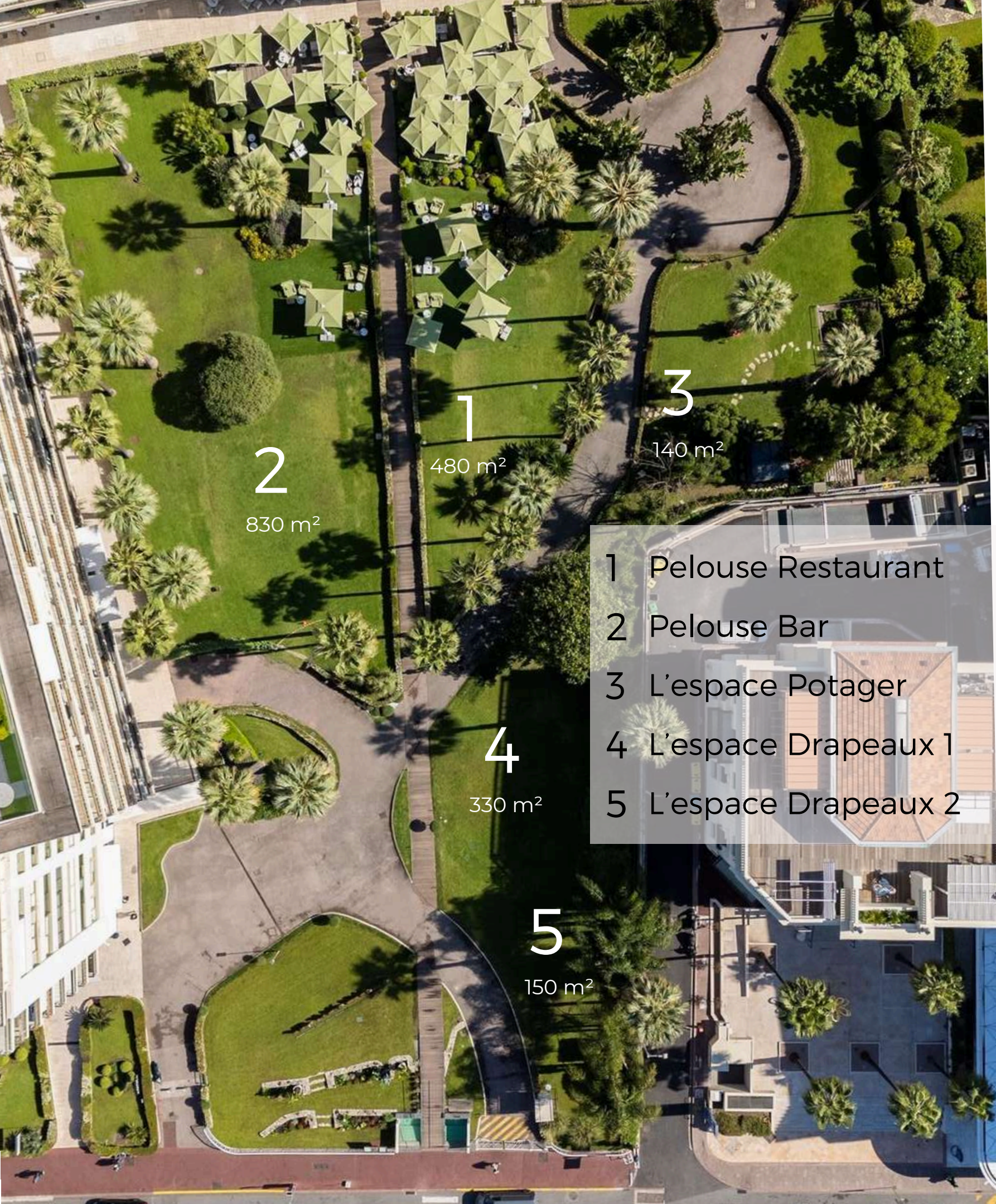




# THE GARDEN

Mondrian Cannes offers a unique and unparalleled experience. Its expansive garden overlooking the sea is a one-of-a-kind gem on the Croisette. With a breathtaking view of the sky, palm trees, and sea, it's the perfect place to relax and unwind. Additionally, the garden's popularity makes it a prime location for hosting a wide range of events.





2  
830 m<sup>2</sup>

1  
480 m<sup>2</sup>

3  
140 m<sup>2</sup>

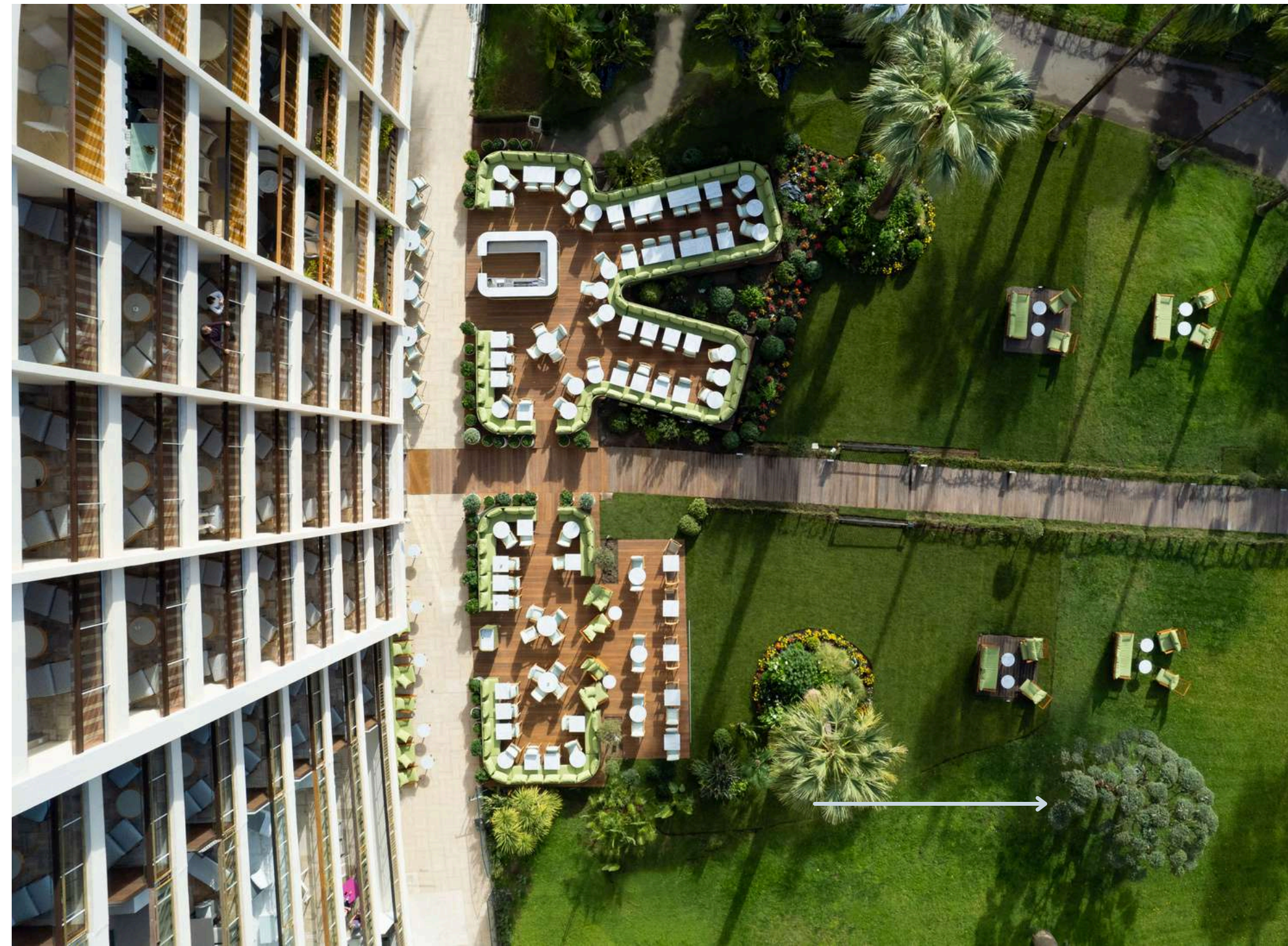
4  
330 m<sup>2</sup>

5  
150 m<sup>2</sup>

- 1 Pelouse Restaurant
- 2 Pelouse Bar
- 3 L'espace Potager
- 4 L'espace Drapeaux 1
- 5 L'espace Drapeaux 2

Private event  
Cocktail  
Pop up

4000M<sup>2</sup> OF  
GARDEN





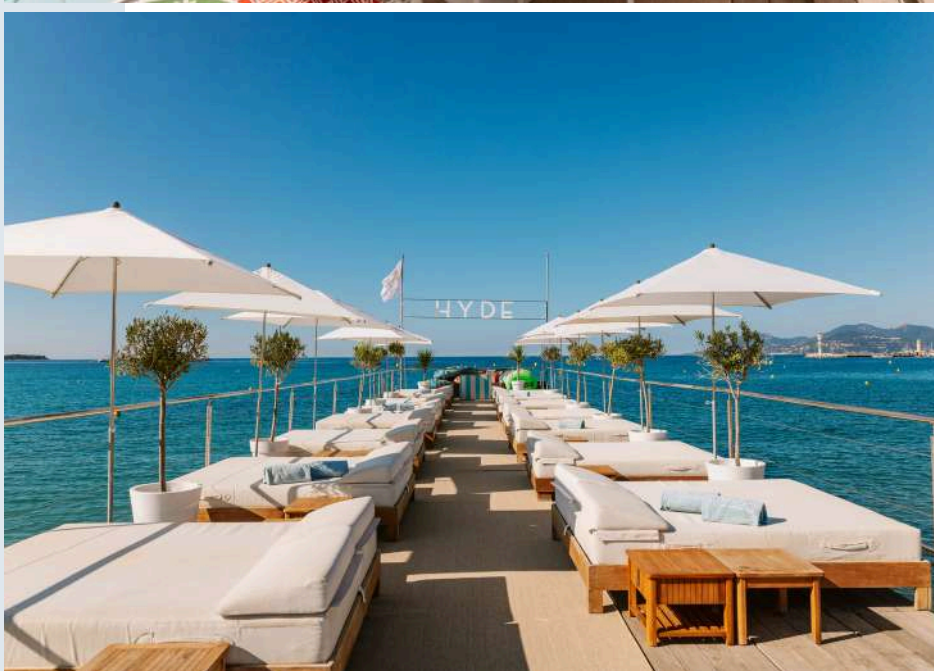




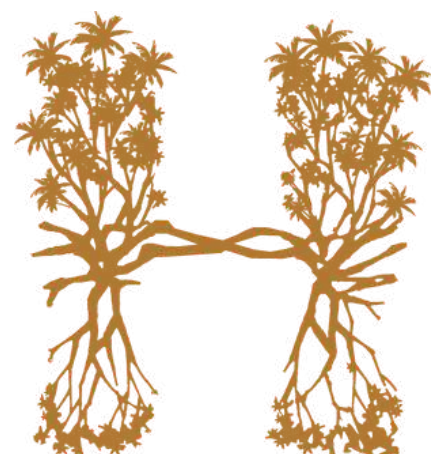


# PRIVATE BEACH

Located on the legendary Boulevard de la Croisette, Hyde Beach Cannes is one of the must-see beaches in Cannes. Warm atmosphere, with accents of dolce vita thanks to its Italian cuisine, attentive service, relaxing during the day and more animated in the evening, Hyde beach is also the ideal place to celebrate an event.







HYDE  
BEACH CANNES

The Hyde Beach Cannes is perfectly located to celebrate events. It is also an ideal place to organize lunches, cocktails or dinners. The spaces can be fully privatized or semi-privatized.

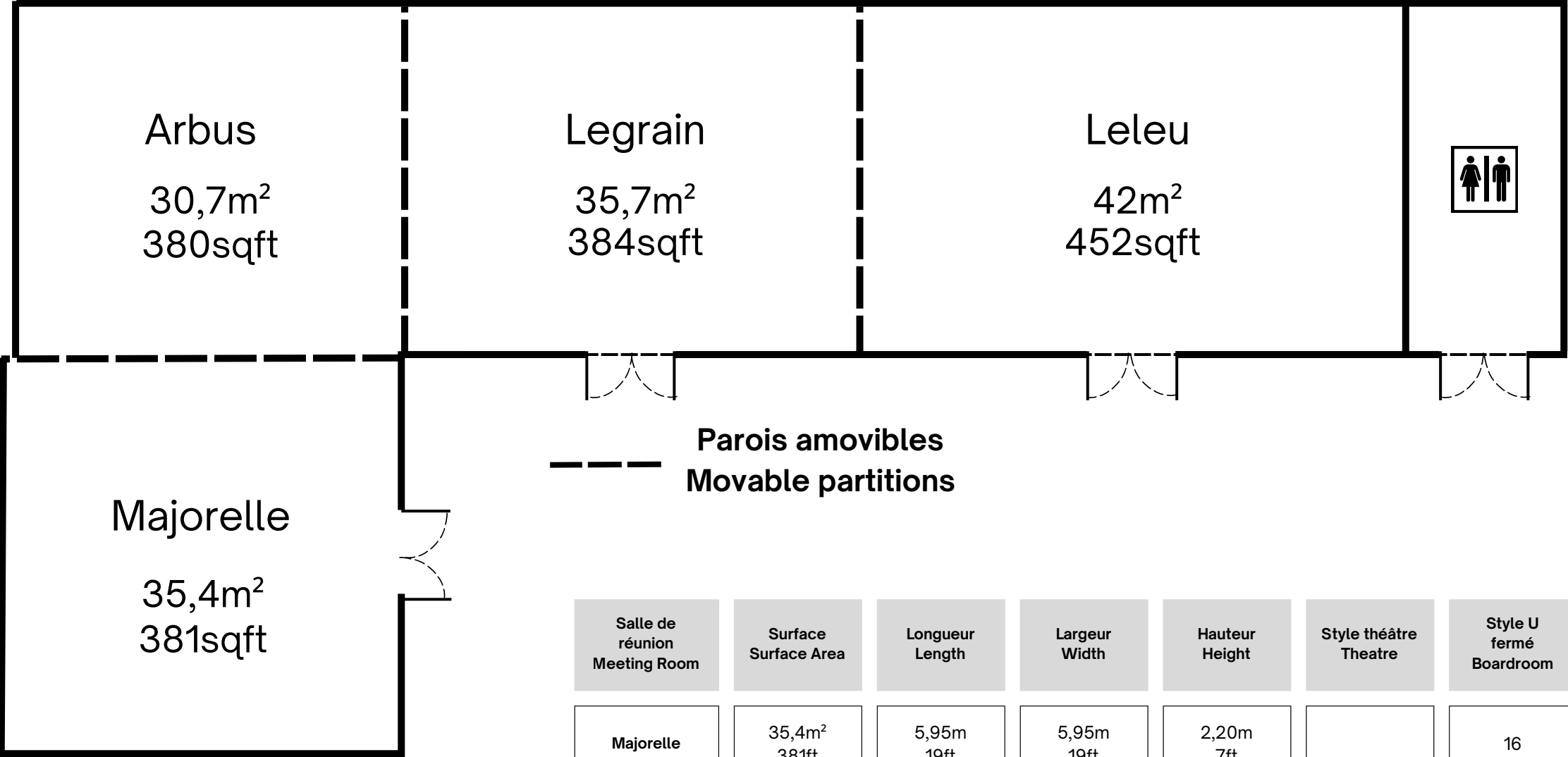
Open every day in season  
160 seats  
Up to 800 people for cocktails

DJ set in summer time  
Music allowed until 2am





# MEETING ROOMS

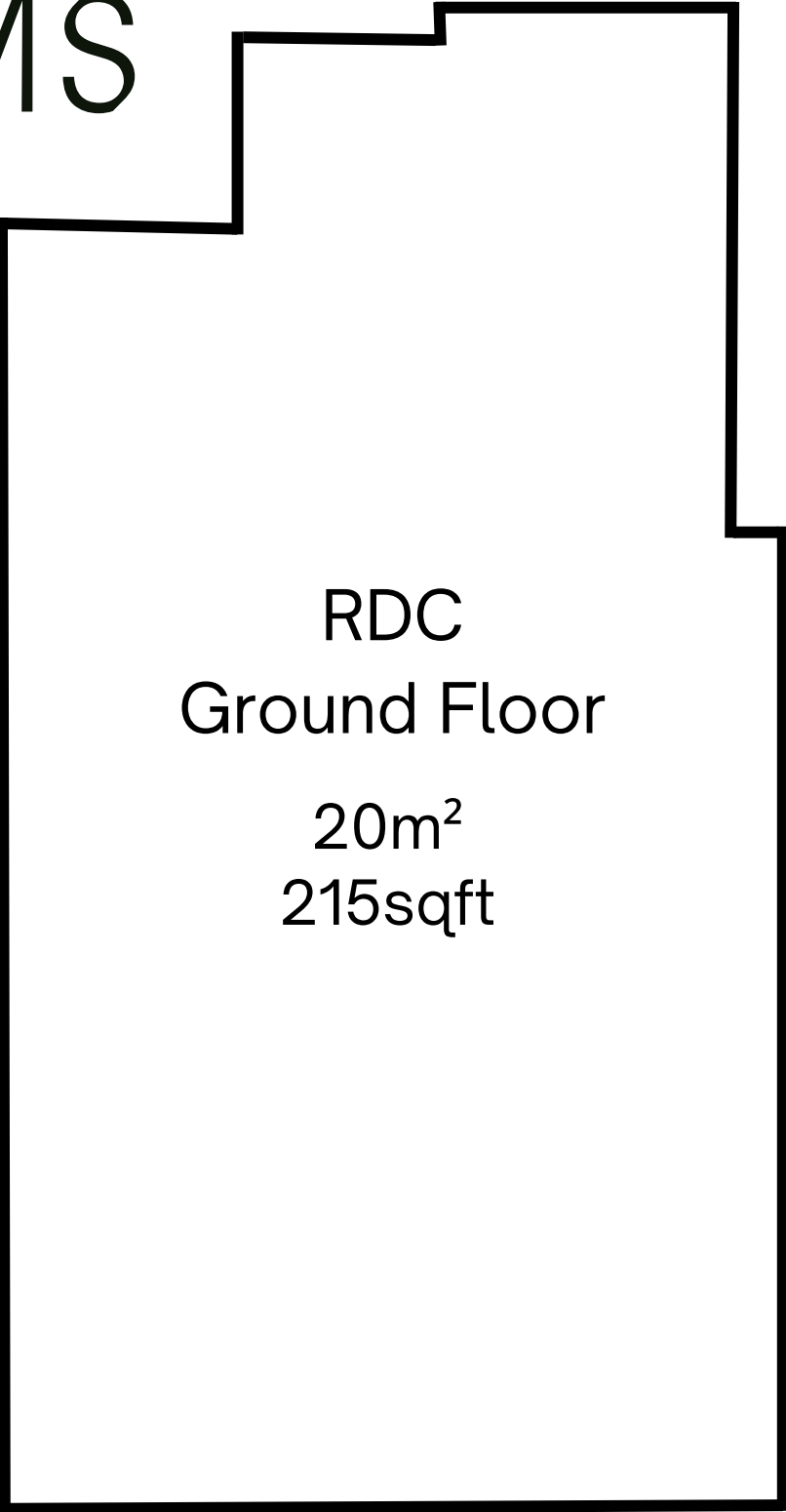


Salle de réunion Meeting Room	Surface Surface Area	Longueur Length	Largeur Width	Hauteur Height	Style théâtre Theatre	Style U fermé Boardroom	Table en U U Shape
Majorelle	35,4m² 381ft	5,95m 19ft	5,95m 19ft	2,20m 7ft		16	12
Arbus	30,7m² 330sqft	5,8m 19ft	5.25	2,20m 7ft		16	12
Legrain	35,7m² 384ft	6,5m 22ft	5,25m² 17ft	2,20m 7ft		24	20
Leleu	42m² 452sqft	8m 26ft	5,25m 17ft	2,20m 7ft		24	20





# MEETING ROOMS



SALLE COCTEAU ROOM COCTEAU							
Salle de réunion Meeting Room	Surface Surface Area	Longueur Length	Largeur Width	Hauteur Height	Style Théâtre Theatre	Style U fermé Boardroom	Table en U U Shape
RDC Ground Floor	20m² 215sqft	5,17m 16ft	3,90m 12ft	1,94/4m 6/13ft		16	14
Mezzanine	12,75m² 137sqft	3,74m 12ft	3,40 11ft	1,92m 6		8	6





# LA GALERIE

	SURFACE AREA	LENGHT	WIDTH	HEIGHT	THEATRE	COCKTAIL	BANQUET	U-SHAPE
ROOM 1	1160 sft	35,7 ft	32,5 ft	14,1 ft	100	180	120	60
ROOM 2	464 sft	27,8 ft	16,7 ft	14,1 ft	40	40	30	30
ROOM 3	202 sft	16,7 ft	12,1 ft	7,5 ft	/	/	/	16

AUDIOVISUAL EQUIPMENT	DISABLED ACCESS	INTERNET WI-FI ACCESS	AIR CONDITIONING / HEATING	CLOAKROOM	BREAKOUT ROOM
TV / Sonorisation	Yes	Yes	Yes	Yes	Yes







# FITNESS CENTER

Fitness area of 70m<sup>2</sup>  
Cardio & weight training area





# CONTACT

JENNIFER VERCELLONE

SALES AND MARKETING DIRECTOR

Jennifer.vercellone@mondrianhotels.com

+33 6 18 28 51 49



45 Boulevard De La Croisette  
06400 CANNES FRANCE





# CONTACT

---

**SUSANNA ORIBES**

SALES & BANQUETING

susanna.oribes@mondrianhotels.com

+33 6 18 28 02 79



45 Boulevard De La Croisette  
06400 CANNES FRANCE

